

Features

- Noncorrosive
- Easy assembly
- Low weight
- Fully safe



FOR WLP350, MWLP350 SERIES

Derating Guidelines

WLP350/MWLP350: Ambient > 50°C, derate by 50% to 70°C. 375 LFM airflow to be maintained

Contents

Mounting Base, Cover, Insulator, Fixing Screws

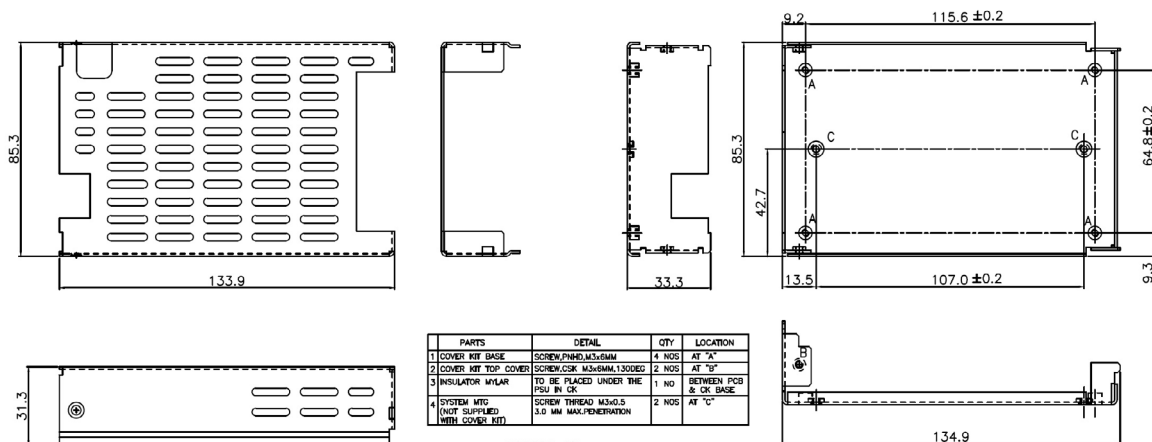
Mechanical Dimensions

Cover and Base Material EG(Zintec)/CRCA/GI 1.0mm thick (Powder coating/ Passivation/ ED coating black)

Marked A: PCB MTG; B: COVER MTG; C: SYSTEM MTG, M3 Thread

All dimensions are in mm. General tolerance :+/-1.0

Mechanical Drawing



WLP350-CK.

MECHANICAL OUTLINE DIMENSIONS.