

# LF(M)VLT60-CK COVER KIT

## Features

- Noncorrosive
- Easy assembly
- Low weight
- Fully safe



## FOR (M)VLT40 & (M)VLT60 SERIES

### Derating Guidelines

VLT40/MVLT40: Ambient > 40°C, derate by 1.3 W/°C to 50°C. 5 CFM recommended to circulate air

VLT60/MVLT60: Ambient > 40°C, derate by 1.3 W/°C to 50°C. 5 CFM recommended to circulate air

### Contents

Mounting Base, Cover, Insulator, Fixing Screws

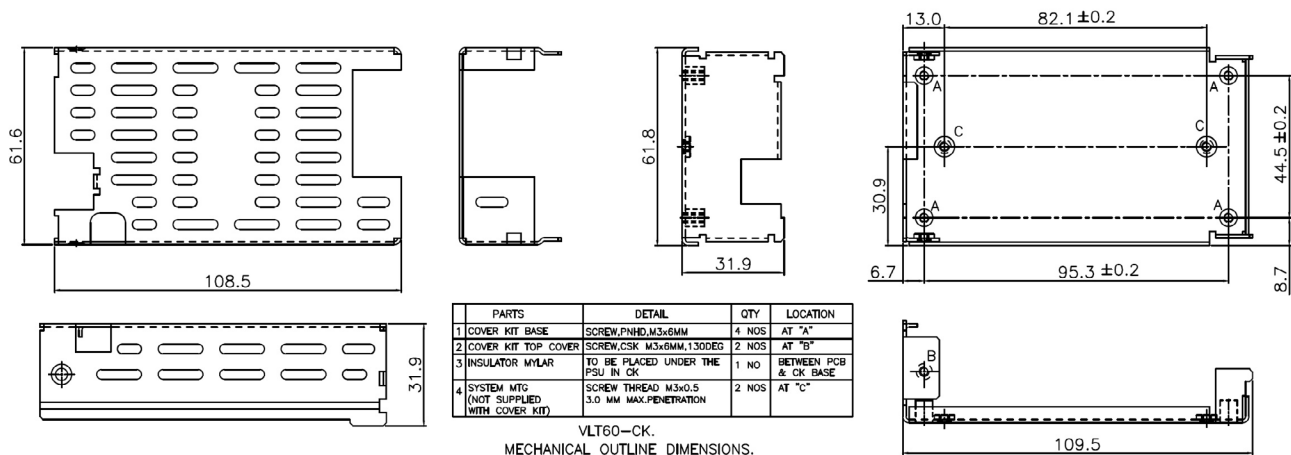
### Mechanical Dimensions

Cover and Base Material EG(Zintec)/CRCA/GI 1.0mm thick (Powder coating/ Passivation/ ED coating black)

Marked A: PCB MTG; B: COVER MTG; C: SYSTEM MTG, M3 Thread

All dimensions are in mm. General tolerance : +/-0.5

## Mechanical Drawing



Innovations in Power