

**Features**

- Noncorrosive
- Easy assembly
- Low weight
- Fully safe



**FOR (M)ULP180-1XXX SERIES**

**Derating Guidelines**

ULP180/MULP180: De-rate to 70% of values mentioned in temperature de-rating curves of open frame models at all load and ambient conditions.

**Contents**

Mounting Base, Cover, Insulator, Fixing Screws

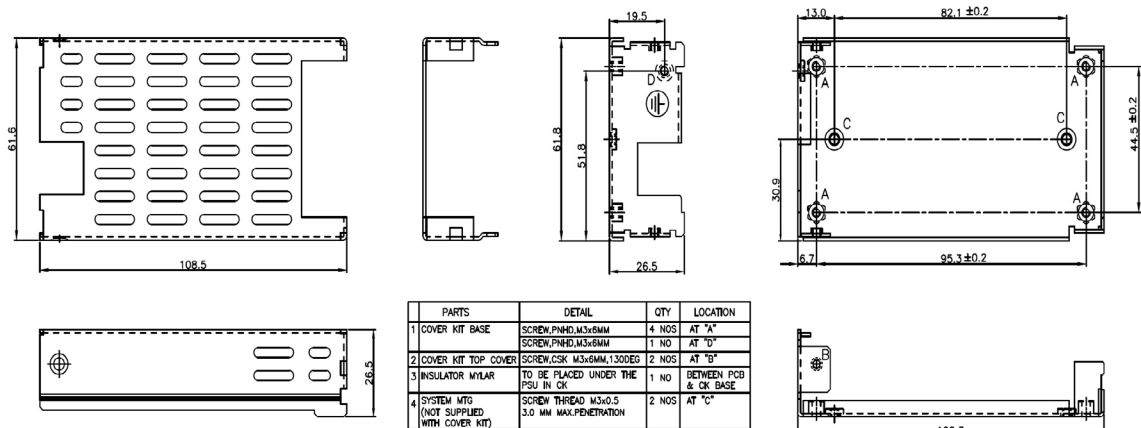
**Mechanical Dimensions**

Cover and Base Material EG(Zintec)/CRCA/GI 1.0mm thick (Powder coating/ Passivation/ ED coating black)

Marked A: PCB MTG; B: COVER MTG; C: SYSTEM MTG

All dimensions are in mm. General tolerance : +/-1.0

**Mechanical Drawing**



ULP180-CK.  
MECHANICAL OUTLINE DIMENSIONS.



Innovations in Power