

LF(M)VLT60-CK COVER KIT

Features

- Noncorrosive
- Easy assembly
- Low weight
- Fully safe



FOR (M)VLT40 & (M)VLT60 SERIES

Derating Guidelines

VLT40/MVLT40: De-rate to 70% of values mentioned in temperature de-rating curves of open frame models at all load and ambient conditions.

VLT60/MVLT60: De-rate to 70% of values mentioned in temperature de-rating curves of open frame models at all load and ambient conditions.

Contents

Mounting Base, Cover, Insulator, Fixing Screws

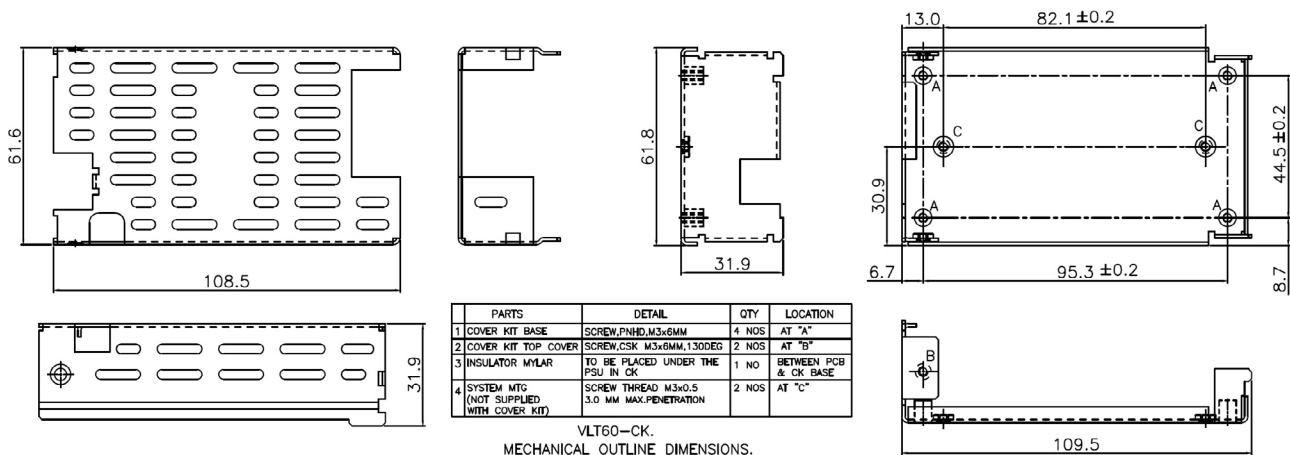
Mechanical Dimensions

Cover and Base Material EG(Zintec)/CRCA/GI 1.0mm thick (Powder coating/ Passivation/ ED coating black)

Marked A: PCB MTG; B: COVER MTG; C: SYSTEM MTG, M3 Thread

All dimensions are in mm. General tolerance : +/-0.5

Mechanical Drawing



Innovations in Power